

ECIP's & 70% Vegetation

Jeremy Ashauer, P.E.

Statewide Erosion & Sediment Control Engineer

WTBA/WisDOT Contractor – Engineer Conference
Wisconsin Dells

January 18, 2024

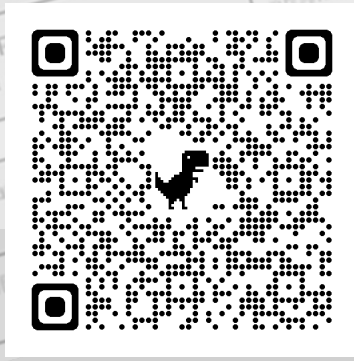
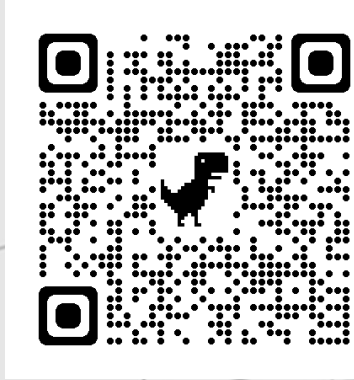
Breakout Session Format

- First half – quick presentation
- Remaining time – Questions & Discussion



ECIP – 2024 Form

- Current DT1073 Form will remain active for 2024
 - See hot links in Spec and CMM
 - WisDOT Forms:
<https://wisconsindot.gov/Pages/global-footer/formdocs/default.aspx>
- “Equivalent DT1073 Form” is also available
 - Same information but restores functionality that was lost with the 2023 update
 - Available on the WisDOT Erosion Control website:
<https://wisconsindot.gov/Pages/doing-business/eng-consultants/cns/rsrcs/environment/erosion-ctrl-drainage.aspx>



ECIP Reminders

- Still some issues getting these to DNR.
 - Contractor is responsible for delivery to both WisDOT and DNR
 - Applies to amendments
- Completeness
 - Initial ECIP submittal should be substantially complete
 - More complete = less comments/revisions = quicker response times



ECIP Reminders

- Answer all questions thoroughly
 - Most sections have several questions in one – answer all parts.
 - If the question doesn't apply, say so – this will avoid unnecessary comments

A2	<p>Narrative of Work</p> <ul style="list-style-type: none">a) Include staging and sequence details not captured in schedule, including winter shut down planb) Include details for minimizing area of exposed ground at various stages throughout the projectc) Include description of planned methods for the dewatering of sediment laden waterd) Include detail for timing and placement of seed and timing of seed water items <p>Provide narrative of project activities here or as attachment</p>
----	---



ECIP Reminders

- Amend the ECIP when necessary
 - Keep it relevant and updated for the site conditions
 - Consider it a “living document”



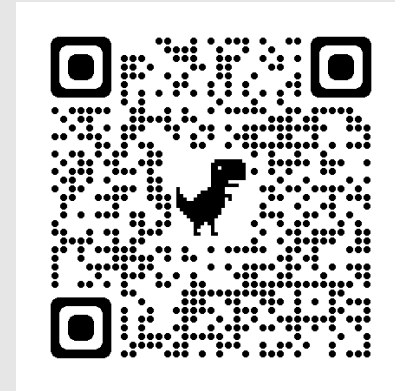
ECIP & Selected Sites

- Provide all the necessary information.
 - Lots of piece meal submittals – slows down review & approval time.
- Some sites can be more complex than others.
 - Allow for adequate review time.
 - Provide follow up information as soon as possible.



ECIP & Selected Sites

- Maintain drainage patterns
- Look for impacts to surrounding properties
- Check proximity to sensitive resources
 - Use DNR Surface Water Data Viewer
<https://dnr.wisconsin.gov/topic/SurfaceWater/swdv>





Surface Water Data Viewer

Maps & Data

Basic Tools

Locate & Identify

Draw & Measure

Additional Resources



Home

Home



Show Layers



Show Legend

Map Layers



Pan



Zoom In



Zoom Out



Previous Extent



Next Extent



Full Extent



Bookmarks



Point Identify

Identify

Layers

All Available Layers

Filter Layers...

Filter

Permits & Determinations

Sediment Inventory

Mapped Wetlands

Wetland Indicators & Soils

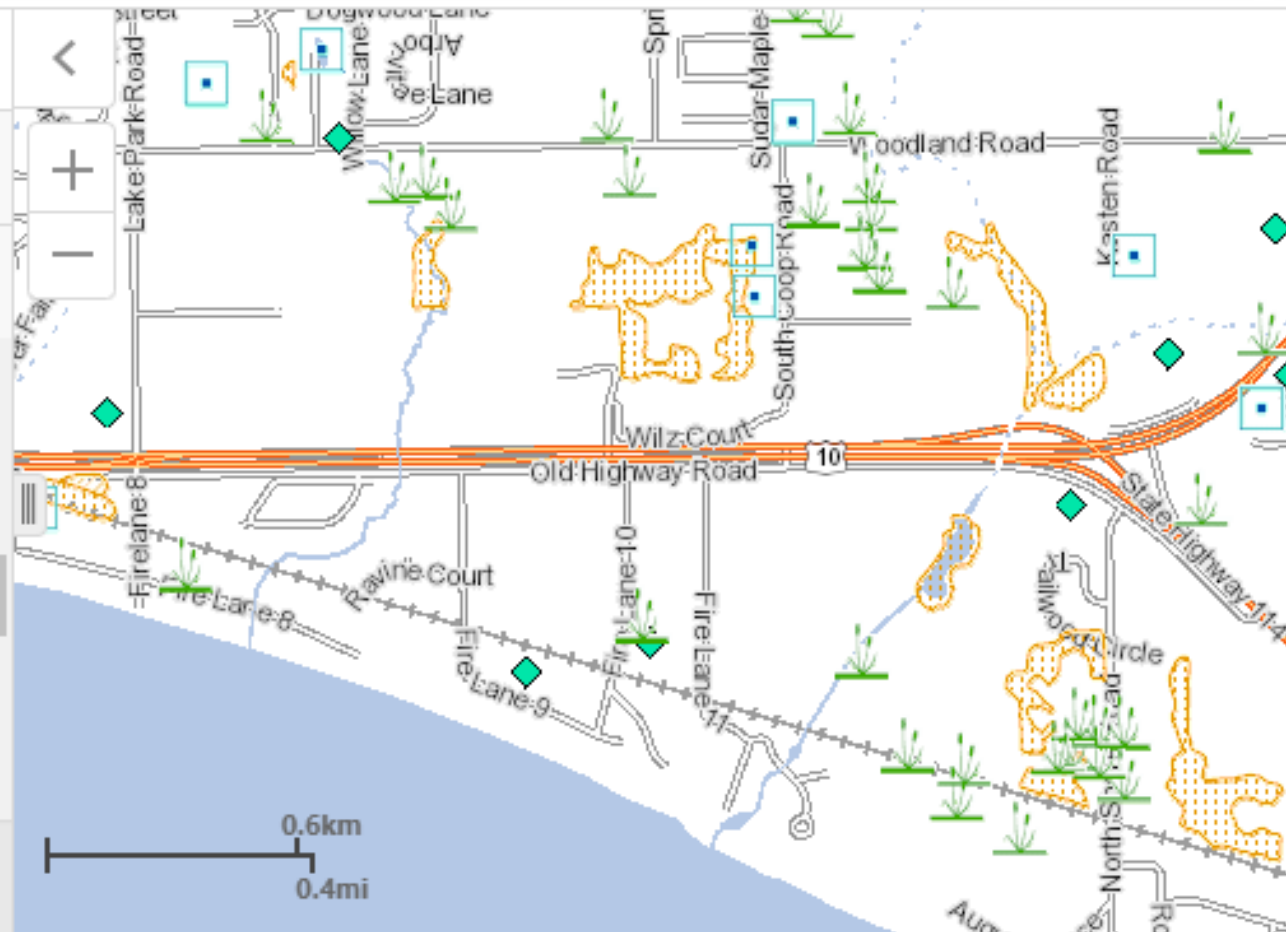
Wild Rice Waters



Home



Layers



70% Vegetation

- Requirement of the Transportation Construction General Permit (TCGP)
 - Must obtain 70% uniform perennial coverage to terminate permit coverage.
- 70% is to be obtained throughout the project
 - Cannot average the site to get to 70% coverage

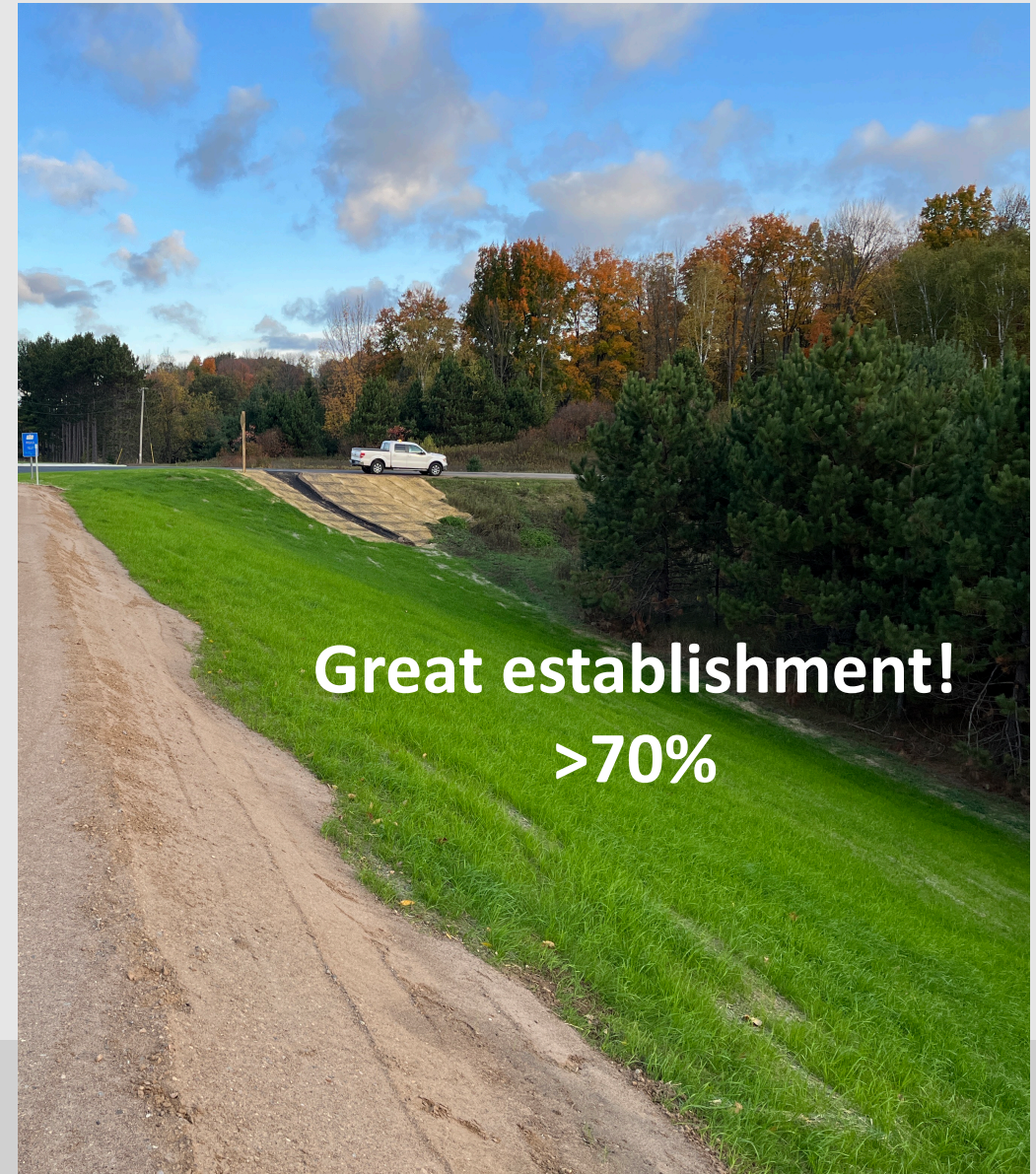


70% Vegetation

- Several Notice of Terminations (NOT's) being sent in without meeting the 70% coverage threshold.
- Photos sent in with the NOT should be representative of the site
 - Difficult to determine coverage from far or obscured angles
 - Should include some at close range with some type of scale



70% Vegetation



70% Vegetation



70% Vegetation



70% Vegetation – Best Practices

- Restore as you go to provide best opportunity for seed establishment
- Proper seed bed preparation
- Proper covering and anchoring of mulch & erosion mat
- Seed watering



Restore as you go...



Restore as you go...



Photo Credit: Craig Webster, DNR



Temporary Stabilization



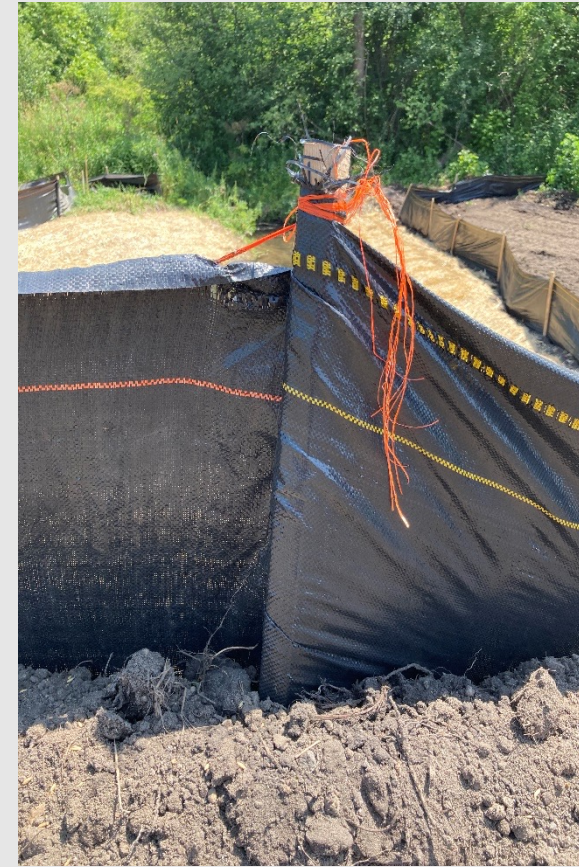
Photo Credit: Craig Webster, DNR



Interim Drainage



Silt Fence

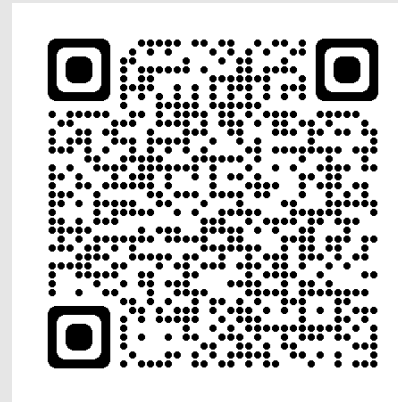
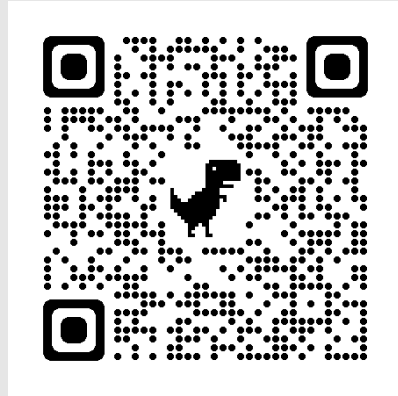


Polyethylene Sheeting



Other Updates

- Trans 401 Revisions
 - Scope Statement has been published
https://docs.legis.wisconsin.gov/code/scope_statements/all/002_24
- 2024 Annual Erosion Control Training
 - 8 locations through February & March



WisDOT Stormwater & Erosion Control Engineers (SWECE)

NW Region:
Peter Young

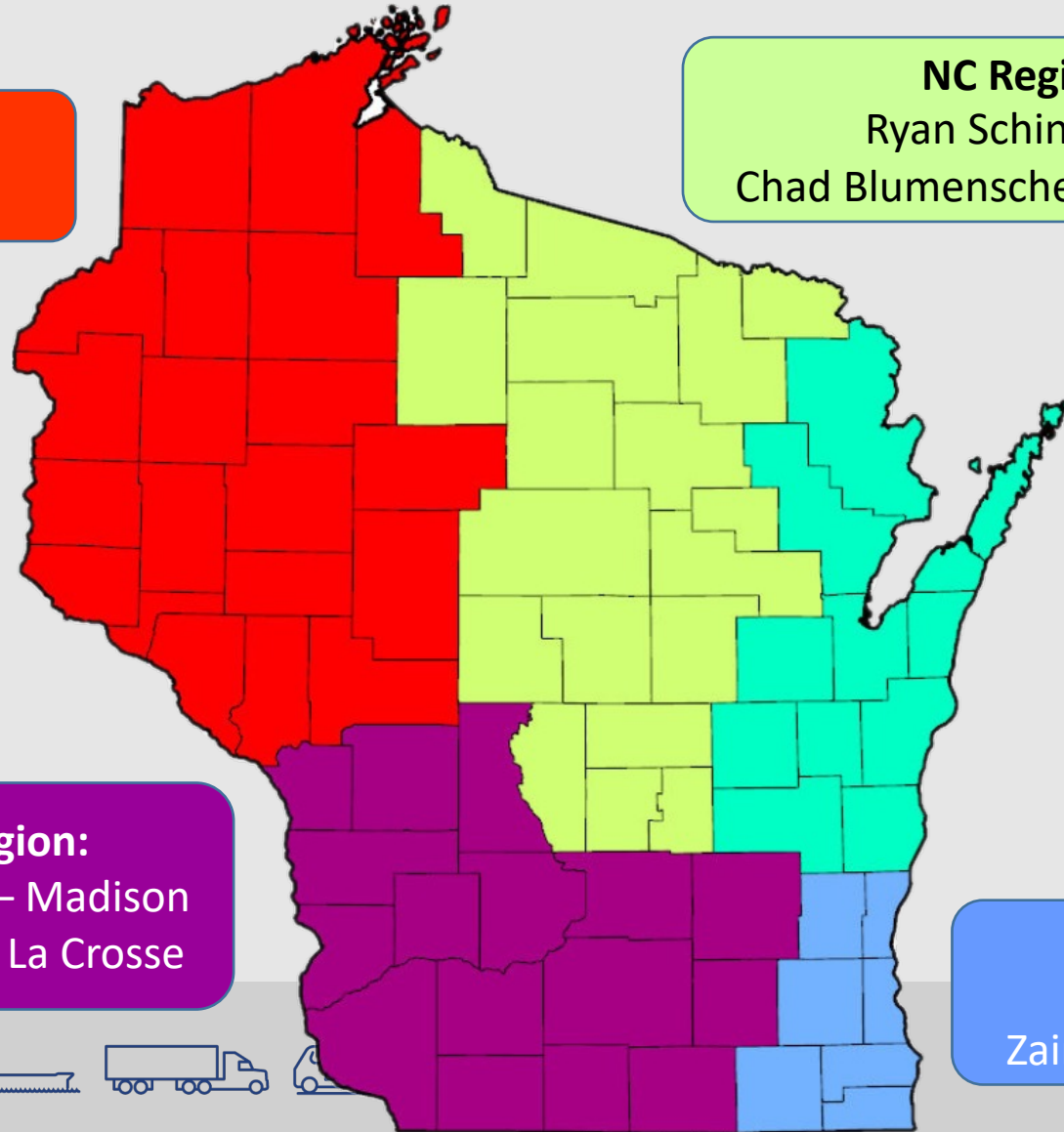
NC Region:
Ryan Schindhelm
Chad Blumenschein (Assistant)

BOA Projects:
Mallory Palmer &
Kelly Halada

NE Region:
Tom Kobus

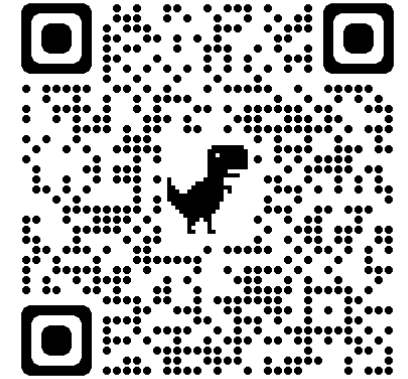
SW Region:
Peter Fillipi – Madison
Sam Kube – La Crosse

SE Region:
Tracy Pinkowski
Zainab Alrebh (Assistant)



DNR Transportation Liaisons (TL's)

<https://dnr.wisconsin.gov/topic/Sectors/Transportation.html>



Liaisons

Northern Region

Bill Clark williamH.Clark@wisconsin.gov

- Amy Cronk amy.cronk@wisconsin.gov
- Amy Lesik amyL.lesik@wisconsin.gov
- Leah Nicol leah.nicol@wisconsin.gov
- Shawn Haseleu shawn.haseleu@wisconsin.gov
- Jon Simonsen jonathan.simonsen@wisconsin.gov
- Wendy Henniges wendy.henniges@wisconsin.gov

Central Region

Bobbi Jo Fischer bobbi.fischer@wisconsin.gov

- Karen Kalvelage karen.kalvelage@wisconsin.gov
- Brad Betthausen bradley.betthausen@wisconsin.gov
- Jay Schiefelbein jeremiah.schiefelbein@wisconsin.gov
- Jim Doperalski, Jr. james.doperalski@wisconsin.gov
- Matt Schaeve matthew.schaeve@wisconsin.gov

Southern Region

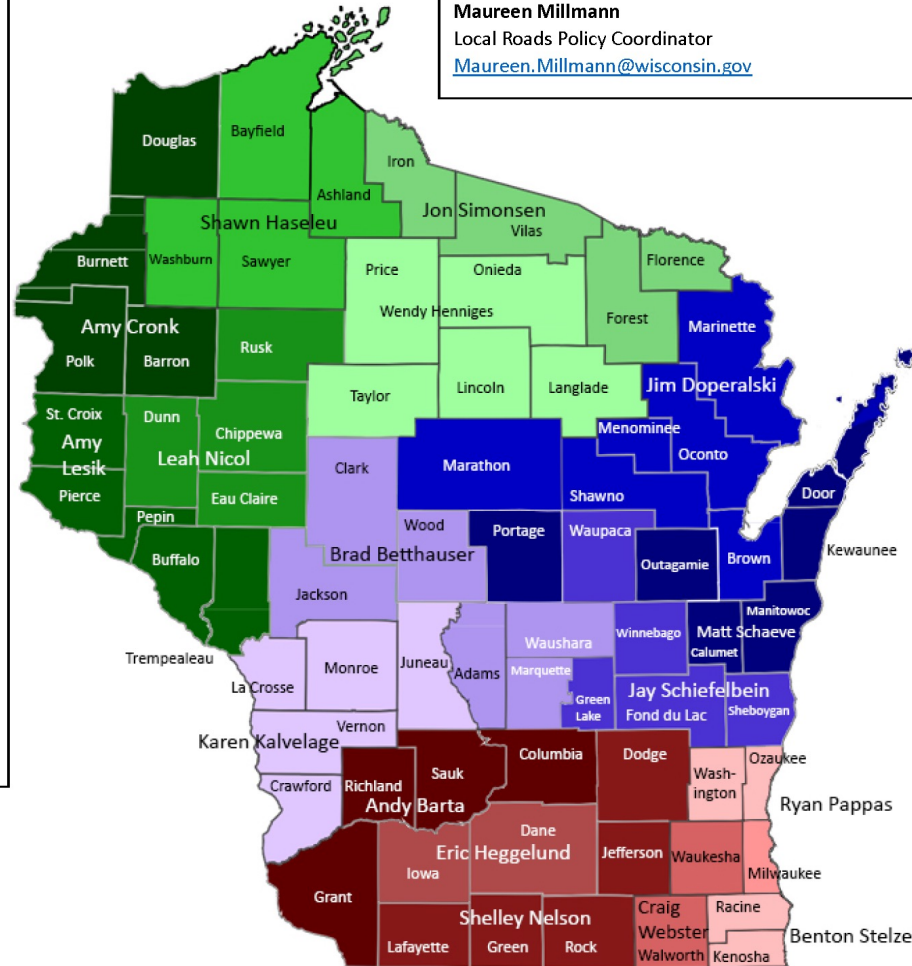
Matt Matrise matthew.matrise@wisconsin.gov

- Andy Barta andrew.barta@wisconsin.gov
- Shelley Nelson shelley.nelson@wisconsin.gov
- Eric Heggelund eric.heggelund@wisconsin.gov
- Craig Webster craig.webster@wisconsin.gov
- Ryan Pappas ryan.pappas@wisconsin.gov
- Benton Stelzel Benton.stelzel@wisconsin.gov

WDNR EA Liaison Assignments

Cami Peterson
Transportation Policy Coordinator
cam.peterson@wisconsin.gov

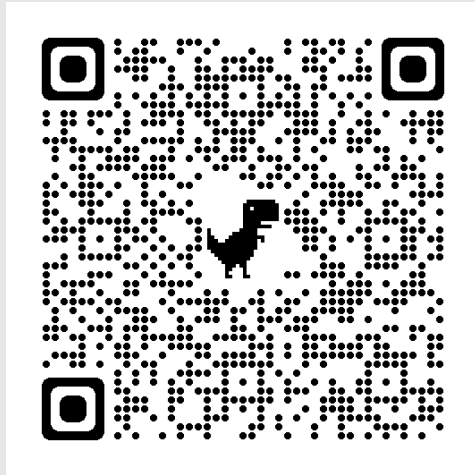
Maureen Millmann
Local Roads Policy Coordinator
Maureen.Millmann@wisconsin.gov



WisDOT Resources

- Erosion Control Website:

<https://wisconsindot.gov/Pages/doing-bus/eng-consultants/cnslt-rsrcs/environment/erosion-ctrl-drainage.aspx>



Erosion control

[Environmental programs](#)

[Environmental areas](#)

[Forms and tools](#)

[Resources and references](#)

Transportation Construction General Permit (TCGP)

Transportation Construction General Permit (TCGP) [Updated](#) 4-24-23

[Transportation construction general permit \(TCGP\) guidance](#)

[Tribal lands guidance](#)

[Winter shut down and substantially complete guidance](#)

[Transfer of coverage form \(DNR form 3500-125\)](#)

[Delegation of Signature Authority Form \(DNR form 3400-220\)](#)

[DNR water permits site](#)

Forms

[See forms and tools page for factor sheets and guidance](#)

[WisDOT Erosion Control Order form DT1074](#)

[WisDOT Construction Erosion and Sediment Inspection form DT1072](#)

[WisDOT ECIP 1073 Erosion Control Implementation Plan \(ECIP\) DT1073 \[Updated\]\(#\) 1-12-2023](#)

Guidance

[Concrete truck washout BMP guidance](#)

Erosion control training

[Erosion Control Inspections](#)

[Water Diversion](#)

[Construction Recordkeeping](#)

[Dewatering](#)

[ECIP 101](#)

Please note additional erosion control training is available in the [WisDOT LearnCenter for Staff](#) or the [WisDOT LearnCenter for consultants and contractors](#). There is [additional information on the LearnCenter](#) for consultants, contractors and municipalities.

Erosion control

[County land and water conservation directory](#)

[Product acceptability list \(PAL\)](#)



Contact Information

- Jeremy Ashauer, P.E.
 - WisDOT Statewide Erosion & Sediment Control Engineer
 - (920) 412-6381
 - Jeremy.Ashauer@dot.wi.gov
- Hans Hallanger, P.E.
 - WisDOT Statewide Stormwater Quality Engineer
 - (608) 266-0279
 - Hans.Hallanger@dot.wi.gov



Questions / Discussion

