



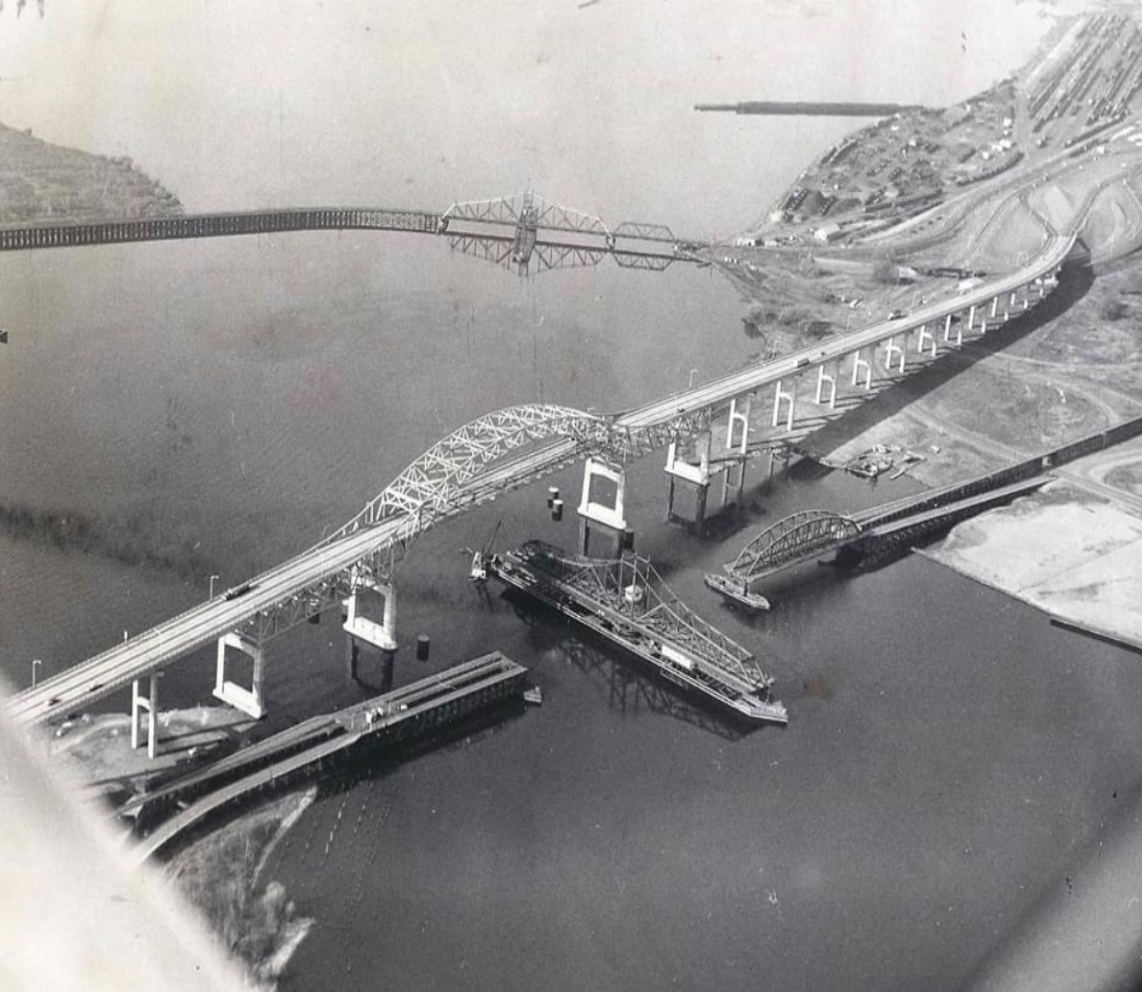
Blatnik Bridge Replacement Project

2024 WTBA | WisDOT Engineer | Contractor Conference

January 18, 2024



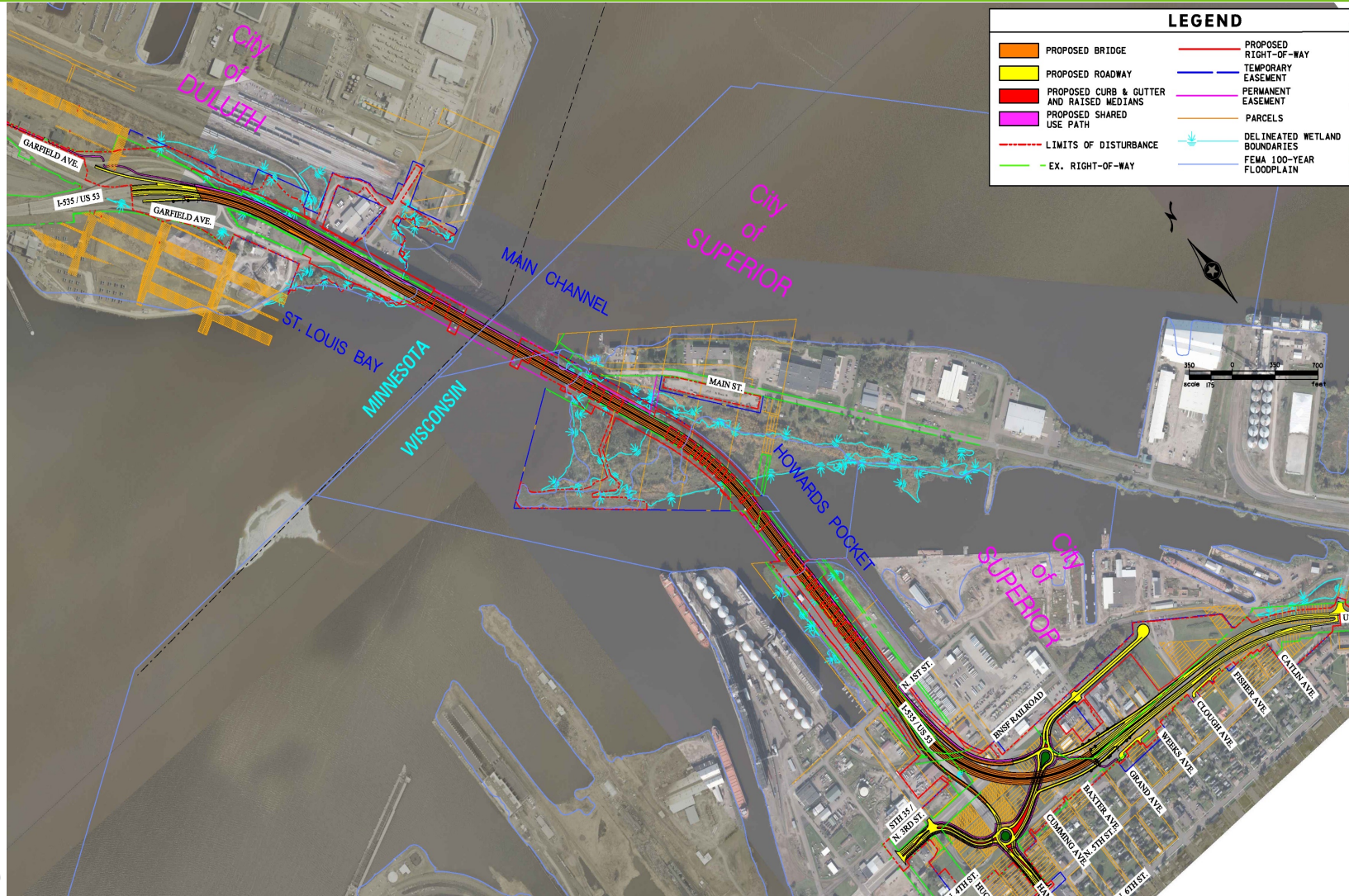
Blatnik Bridge Overview



- Opened to traffic in **1961**
- Approximately **8,000** feet long (*1.5 miles*)
- **120-foot** clearance over St. Louis Bay
- Carries **four** traffic lanes (*two in each direction*)
- Accommodates **33,021** vehicles per day (*2019*)
- Bridge conditions limit vehicle weight to about **60%** of a standard highway bridge

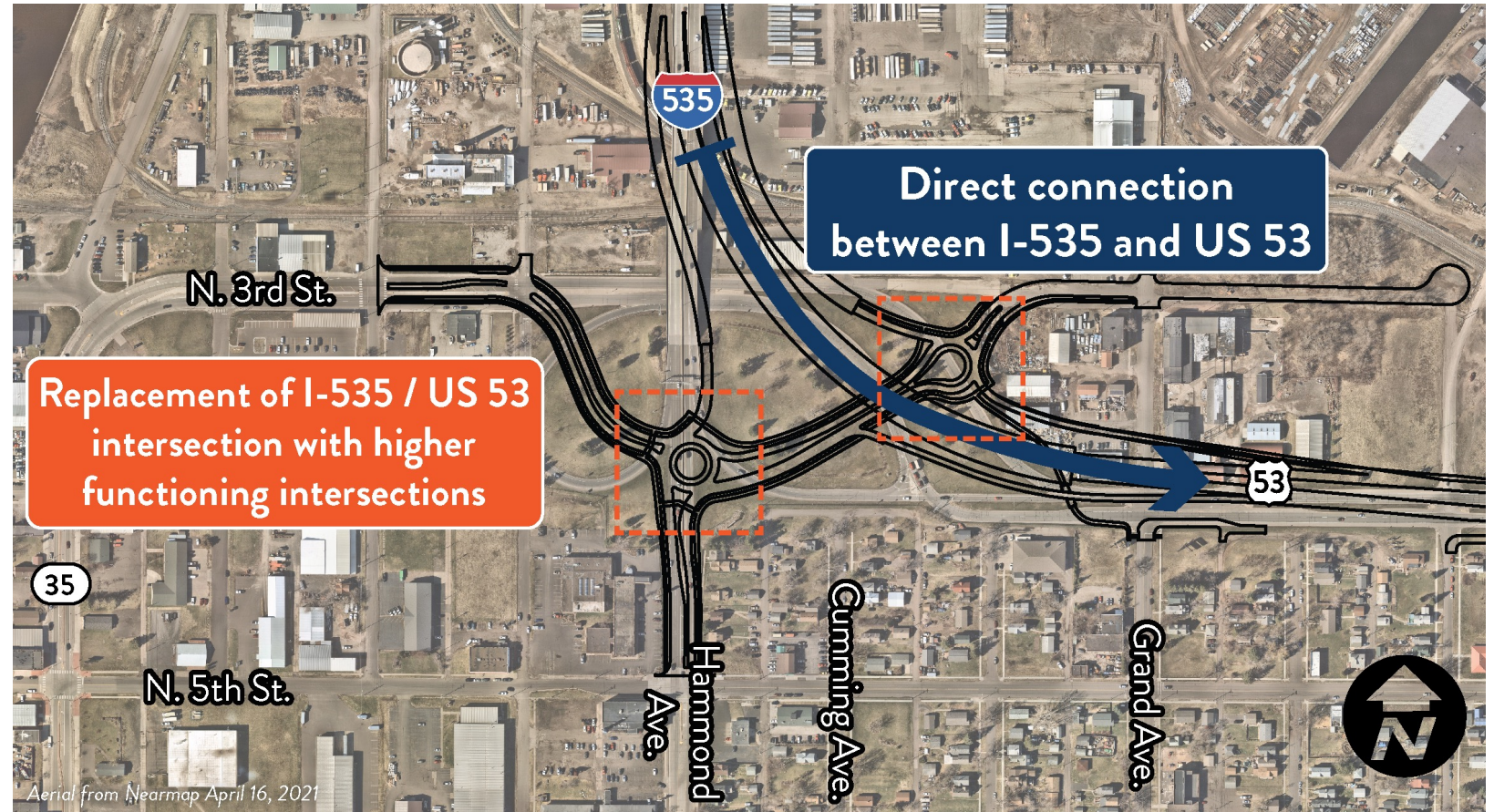
★ Preferred Alternative: Alternative 1

Existing Alignment + Offset Diamond Interchange+ Shared Use Path



Proposed Traffic Improvements

- New direct connection from I-535 to US 53
- Replacement of the traffic signalized intersection at I-535/US 53
- Removal of the I-535 southbound exit loop ramp



Wisconsin Interchange Detail



Project Status

Current Funding:

- Minnesota and Wisconsin have identified approximately \$800 million
- States are actively seeking additional funding:
 - Infra/BIP
- Requesting a tad over \$1 billion

NEPA Status:

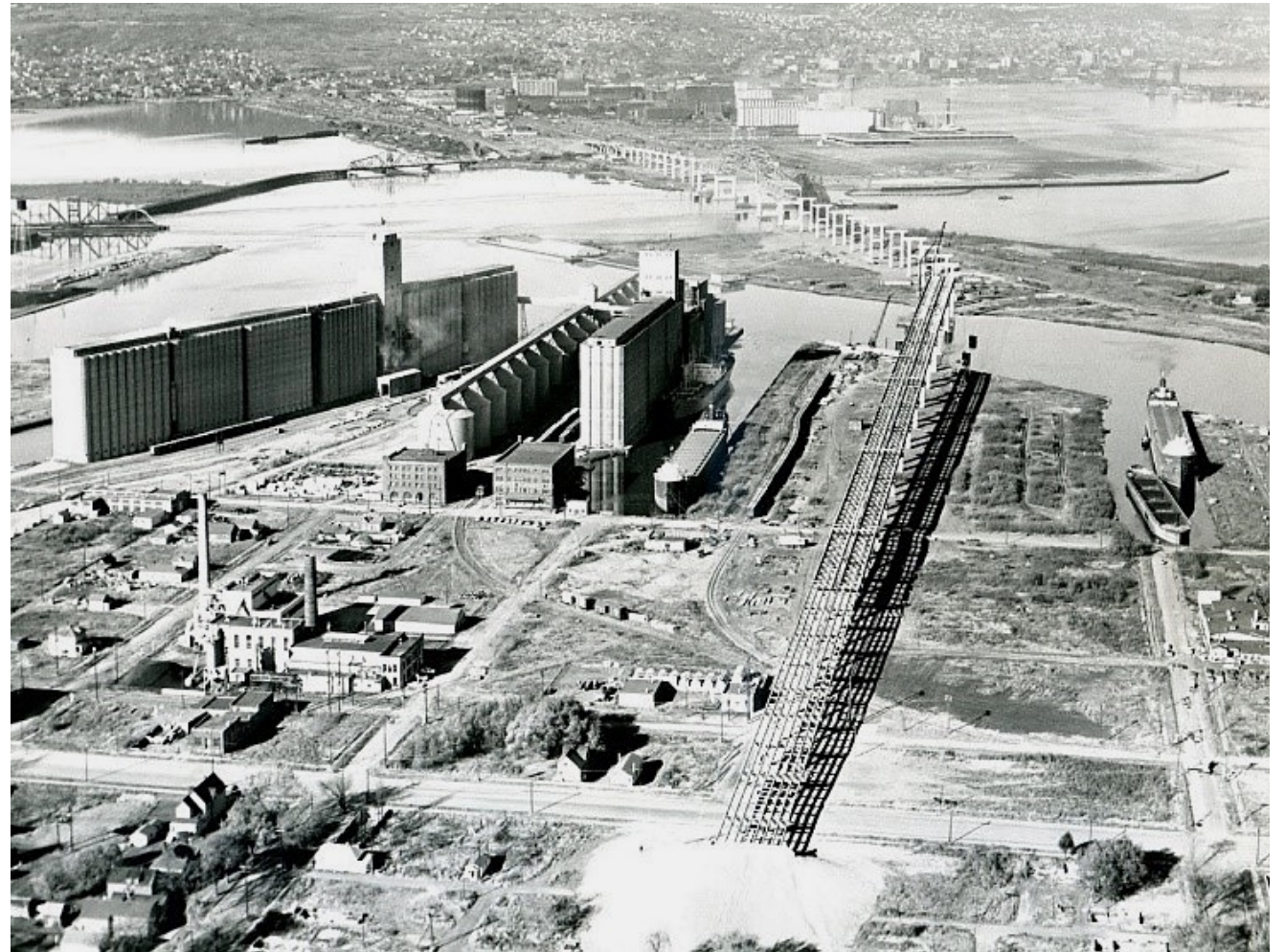
- Expecting a FONSI spring 2024



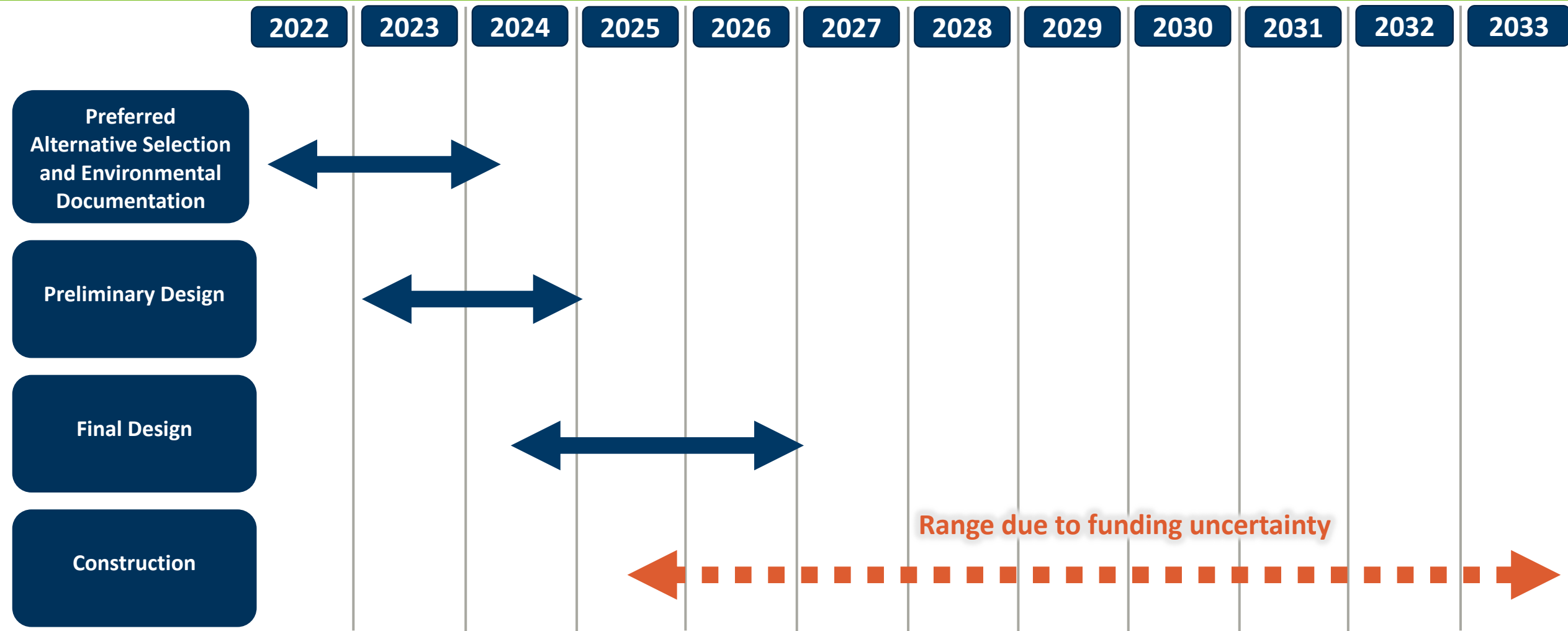
Selected Project Delivery Method

Delivery method:

- Announced 12/23/23
- Design/Build
- Updating schedule



Project Schedule – Design/Bid/Build



Significant Project Challenges

Contaminated Materials and Hazardous Waste

Nearly all material is contaminated

Historic Properties and Section 106

Potential for Cultural Resources Impacts

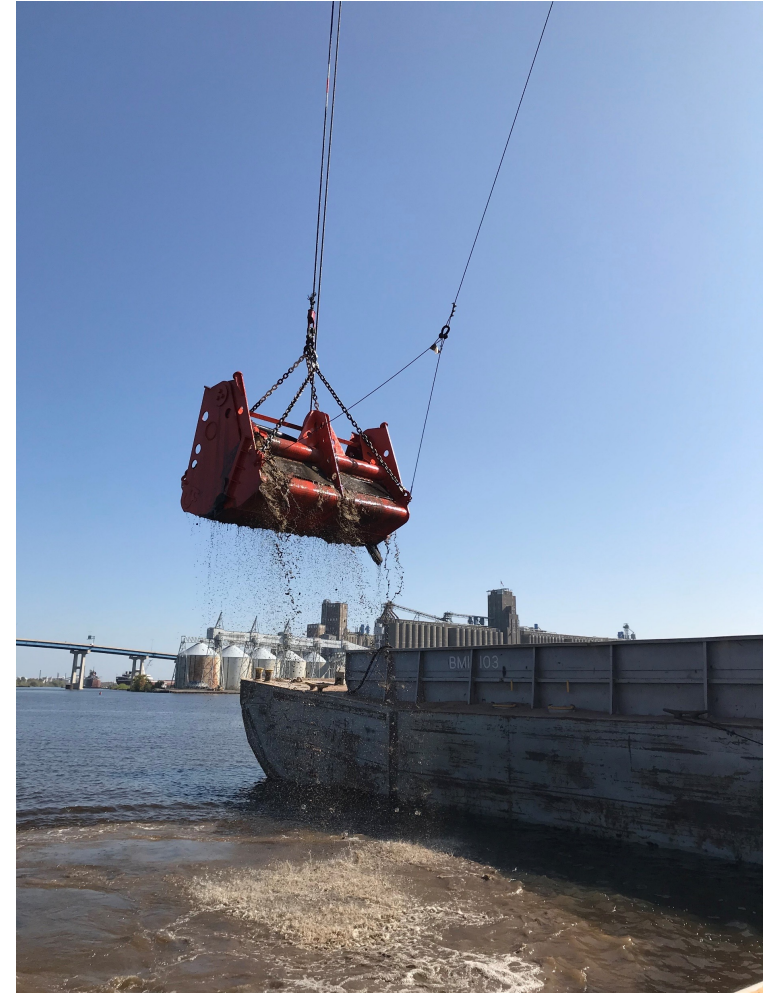
Property Impacts

8 industrial relocations

Permitting

Multi-state

Busiest Port on the Great Lakes



Thank you!

