

# **I-94 East-West 70<sup>th</sup> Street to 16<sup>th</sup> Street, Milwaukee**

**Jeff Bohlen, P.E.**  
Southeast Freeways Design Chief

WTBA C-E Conference

January 2024

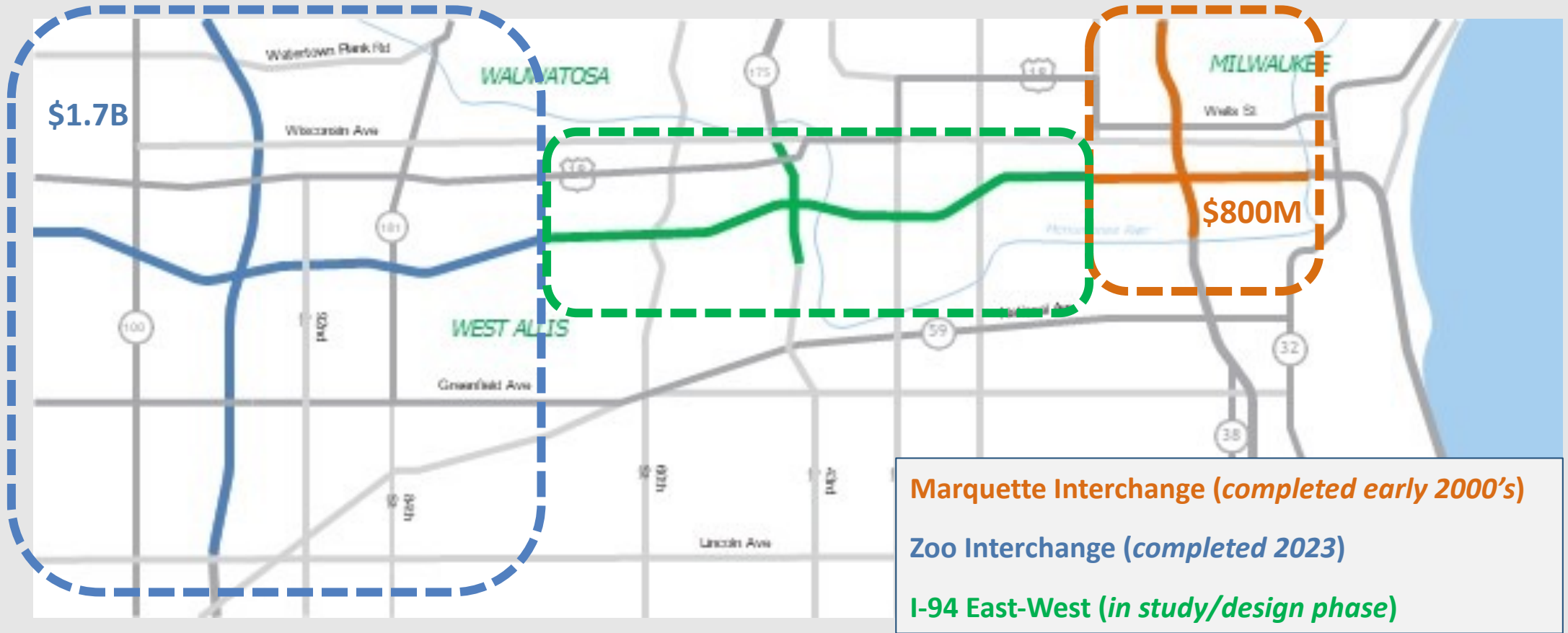
# Project Background

- Late 1990s – Major Investment Study
- 2012-2016 –
  - FHWA issues Record of Decision
  - approval rescinded in 2017
  - project de-funded
- July 2020 – Project was restarted
- Spring 2024 – Anticipating ROD Signature



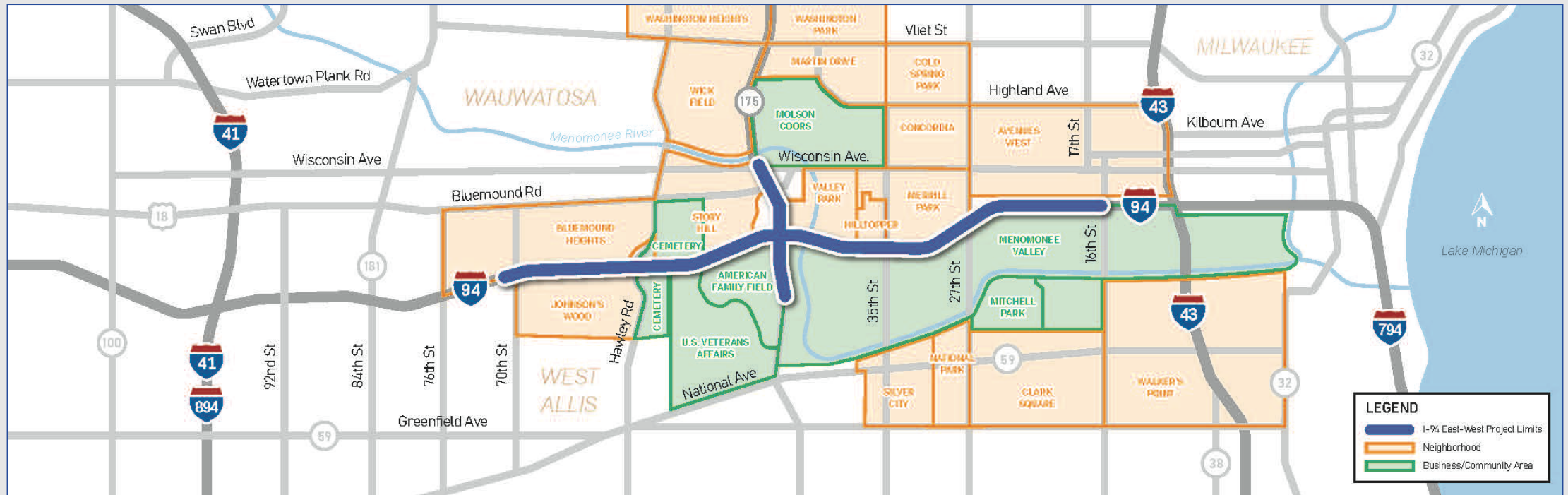
# Project Connections

3.5-mile connection between Marquette Interchange and Zoo Interchange projects



# Project Corridor

- I-94 from 70th Street to 16th Street; WIS 175 from Wisconsin Avenue to just south of stadium
- Located entirely in the City of Milwaukee, with close proximity to Wauwatosa, West Allis, and West Milwaukee



# Preferred Alternative

- Four through lanes in each direction
- Stadium Interchange right-sized to a Diverging Diamond Interchange
- Modern design standards placing all entrance/exit movements on right hand side



# Preferred Alternative

***WisDOT recommends a modernized corridor with four lanes in each direction.***

*This alternative includes replacing the Stadium Interchange with a diverging diamond interchange, improvements to local roads to mitigate the partial closure of the Hawley Road Interchange, as well as increased bicycle and pedestrian connections.*

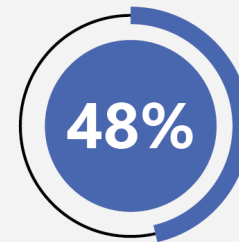
## Benefits:

- Improves safety
- Improves operations
- Replaces deteriorated infrastructure
- Responsive to public input



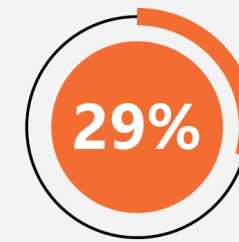
Modernization promotes  
**SAFER TRAVEL**

Since its reopening in **2008**, the **MARQUETTE INTERCHANGE** has seen



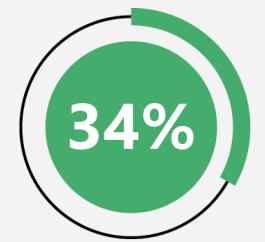
FEWER CRASHES

Since its reopening in **2018**, the **ZOO INTERCHANGE** has seen



FEWER CRASHES

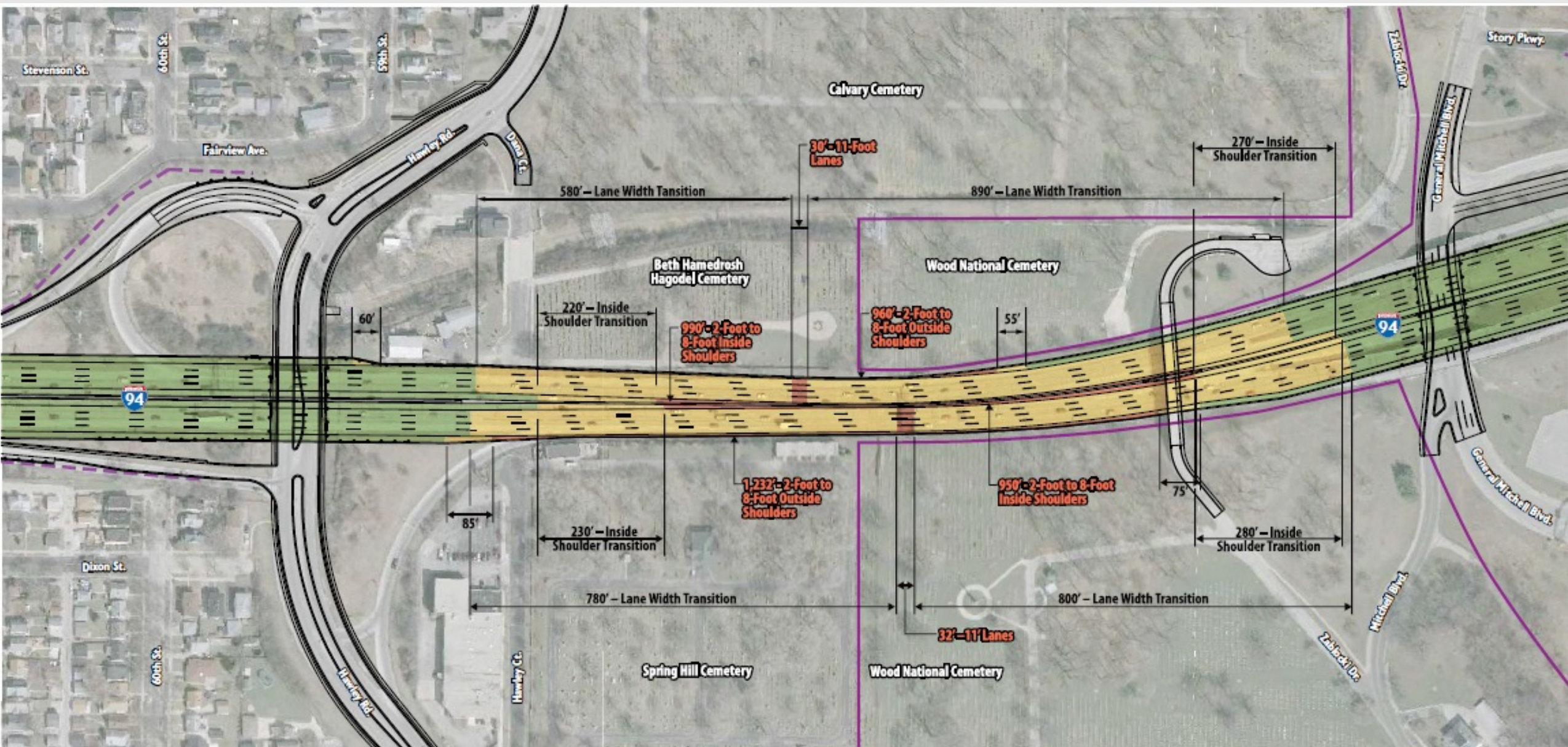
Since its reopening in **2020**, **I-94 NORTH-SOUTH** has seen



FEWER CRASHES

In addition to **SAFETY**, lower crash rates mean **FEWER COSTS** to motorists and **IMPROVED TRAFFIC FLOW**.









# Comparing Mega-Projects

	I-94 East-West	Zoo Interchange	Marquette Interchange
Freeway miles	3.5 miles	9 miles	4 miles
Square foot of bridges	677,300 (42 bridges)	1.3 million	1.9 million
Length of retaining walls	8.9 miles (67 retaining walls)	11 miles	4.9 miles
Open to traffic	Early 1960s	1964	1969
Age at reconstruction	~60	50	35
Traffic (vehicles per day)	158,000-178,000	350,000	285,000



# Comparing Mega-Projects

	I-94 East-West	Zoo Interchange	Marquette Interchange
Freeway miles	3.5 miles	9 miles	4 miles
Square foot of bridges	677,300 (42 bridges)	1.3 million	1.9 million
Length of retaining walls	8.9 miles (67 retaining walls)	11 miles	4.9 miles
Open to traffic	Early 1960s	1964	1969
Age at reconstruction	~60	50	35
Traffic (vehicles per day)	158,000-178,000	350,000	285,000



# Key considerations

- Construction Staging
- Historic and sacred cemeteries adjacent to corridor
- Major League Baseball – major traffic generator with same busy season as construction
- 100s of business – Menomonee Valley and Near West Side of Milwaukee
- Gateway to Milwaukee – major business, residential and tourist destinations



# Key Stakeholders

- FHWA
- City of Milwaukee
- Milwaukee County
- Major League Baseball (Milwaukee Brewers and The Stadium District)
- Menomonee Valley Partners
- Near West Side Partners
- VA Medical/Wood National Cemetery



# Anticipated Schedule

- 2024: Final EIS and Record of Decision (Spring)
- 2024-25: Preliminary and Final Design
- 2025-2027: West Leg & Early East Leg Construction (starts Fall 25)
- 2025-2027: Final Design continues – Stadium and East leg
- 2027-2031: Stadium and East Leg Construction

***Dependent on approvals and future funding allocations***



# Thank You

