

# WISCONSIN RIVER BRIDGES WTBA/WisDOT Contractor-Engineer Conference Steven Porter – WisDOT Project Manager

WisDOT ID 1010-10-82

IH 39/90/94

Columbia County

**January 18, 2024**



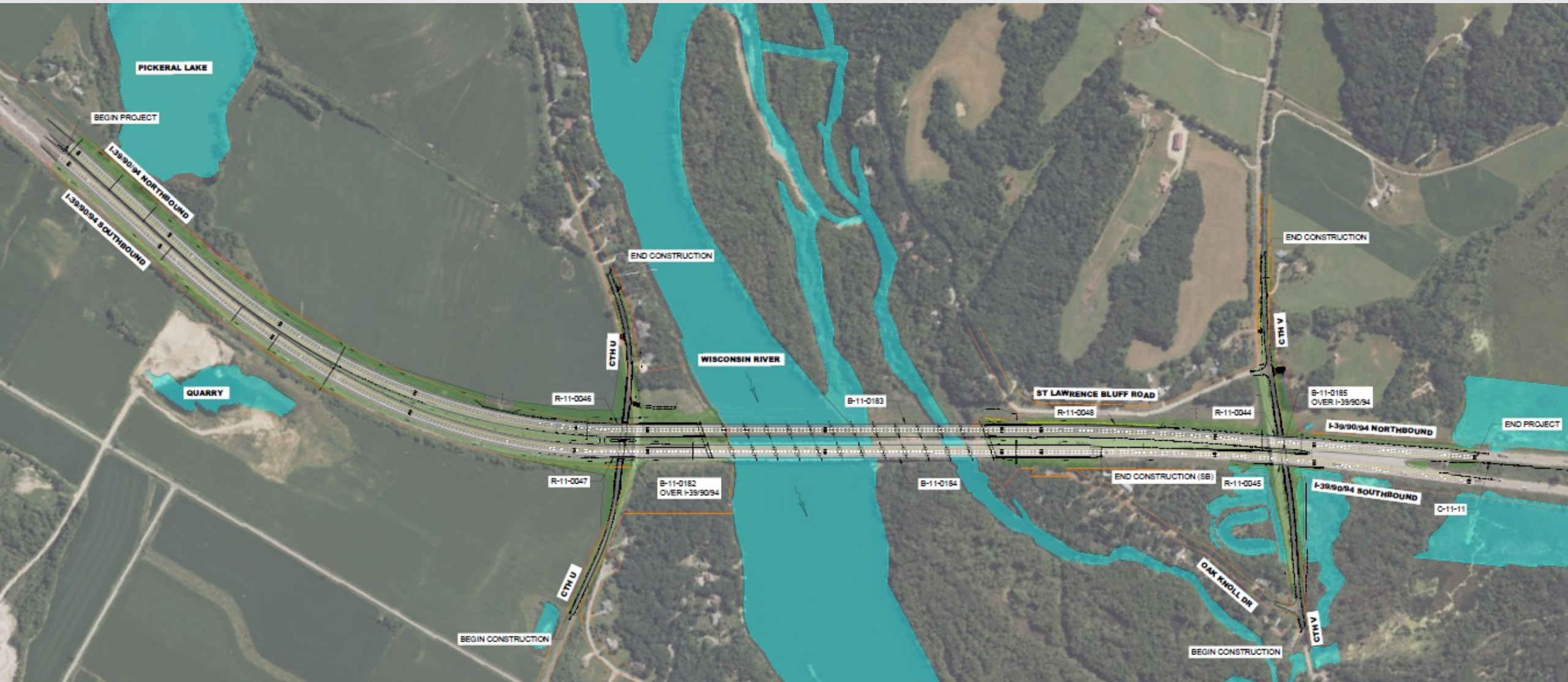
# Agenda

- Project Overview
- Bridge Cross Section
- Staging
- Questions





# Project Overview

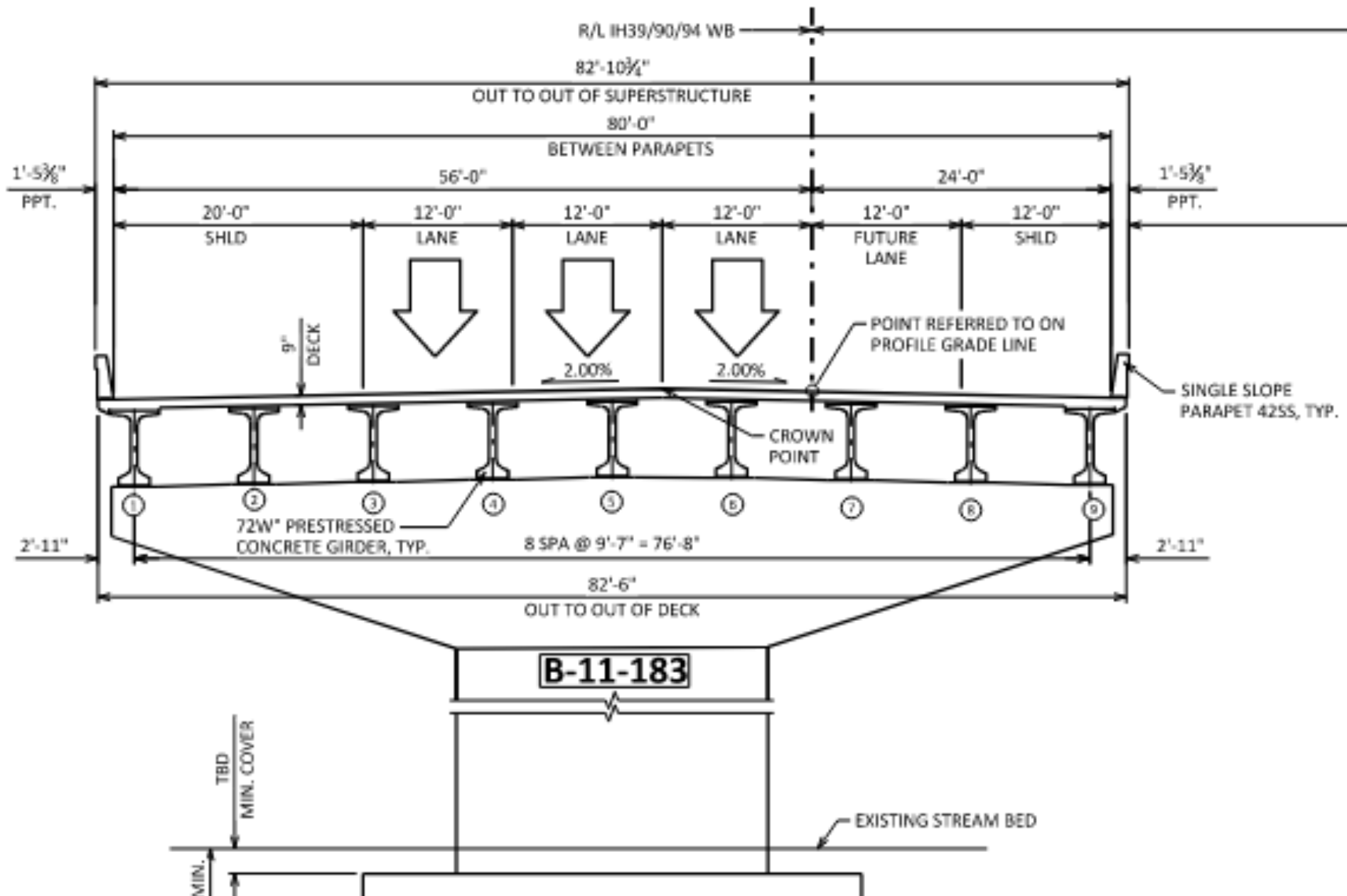


# Project Overview Continued

- 4 Bridges
- 1 Culvert Extension
- 5 Retaining Walls
- Reconstructing 1.8 miles of IH 39/90/94



# Bridge Cross Section





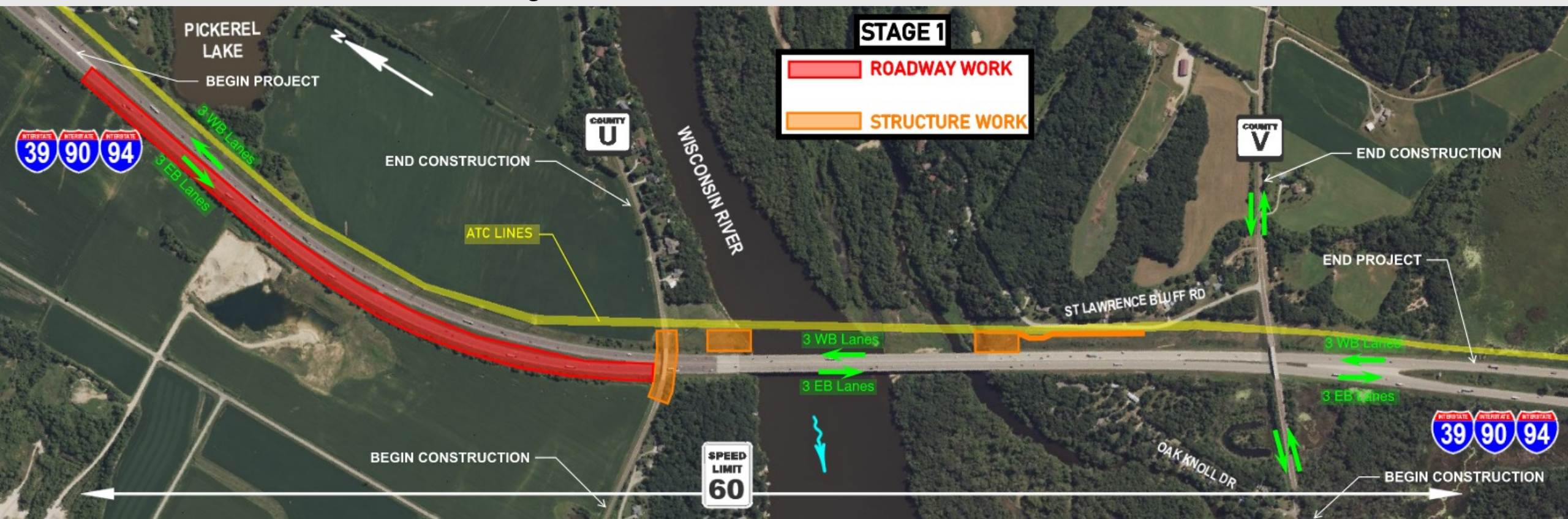
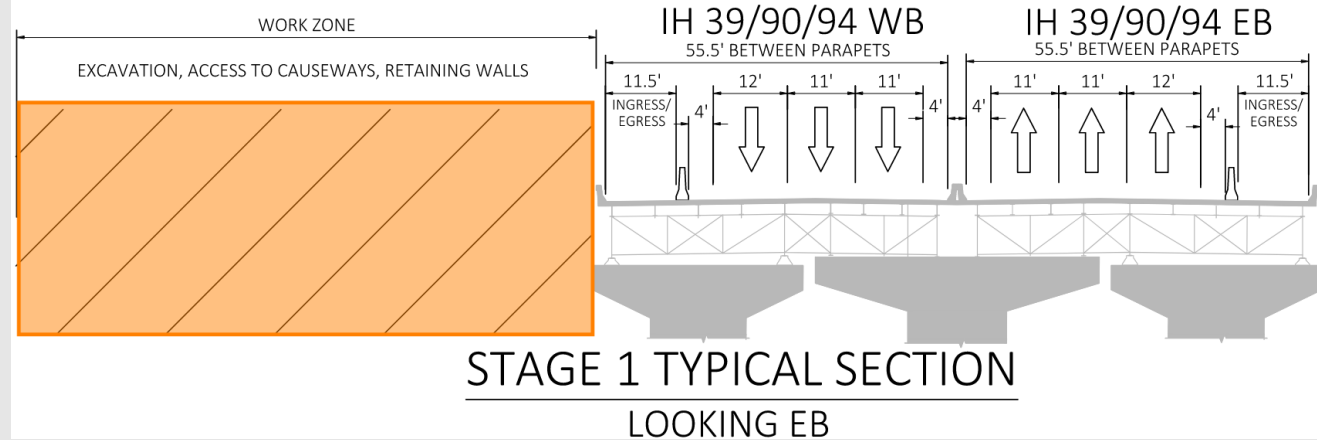
# Stage 1 – 2024

## Traffic

- IH 39/90/94 - 3 lanes each direction on existing bridges
- CTH U - closed
- CTH V - 1 lane each direction on existing bridge

## Construction

- WI River WB bridge access work
- R-11-48 retaining wall
- EB roadway temp widening
- WB roadway off-alignment grading
- CTH U bridge removal





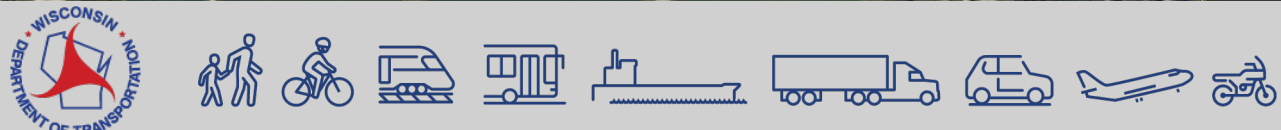
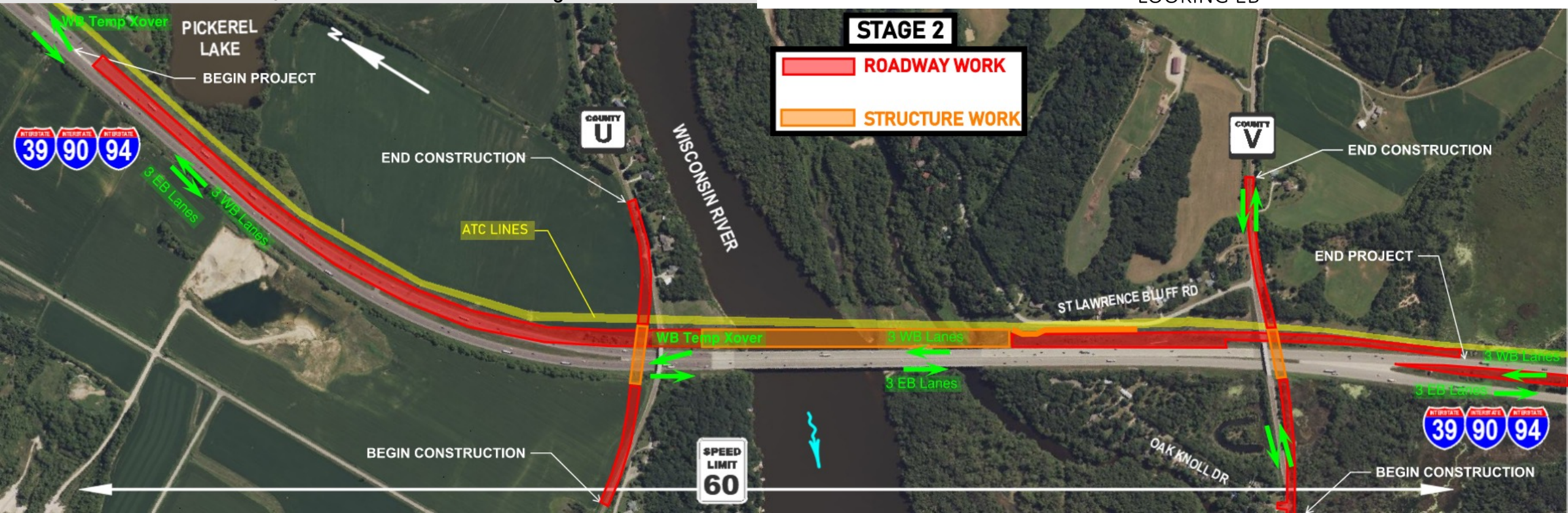
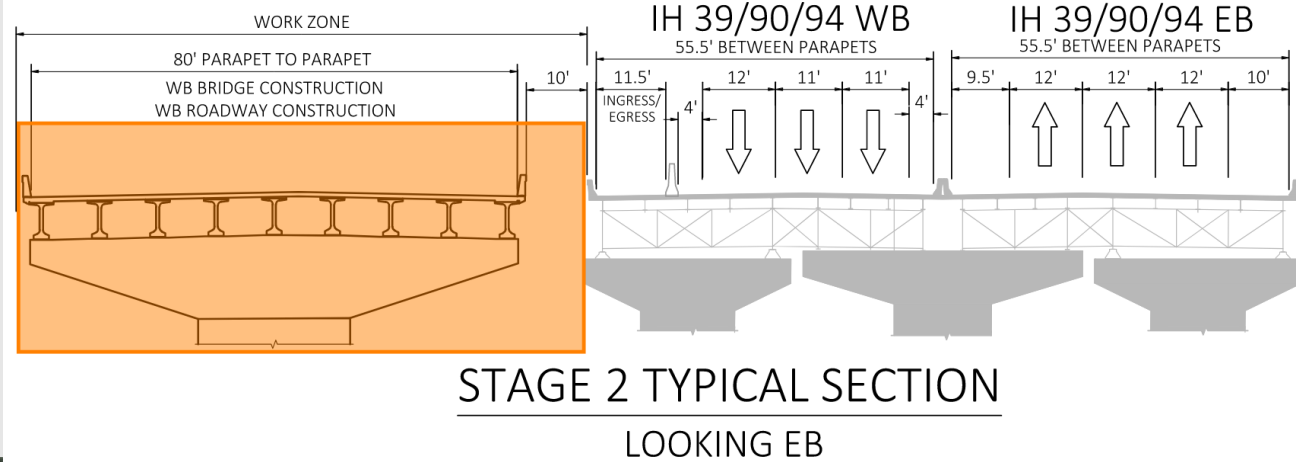
# Stage 2 – 2024 to 2025

## Traffic

- IH 39/90/94 - 3 lanes each direction on existing bridges
- CTH U – closed, then 1 lane each direction on new bridge
- CTH V - 1 lane each direction (short-term local traffic only) on existing bridge, then on new bridge

## Construction

- WI River WB bridge
- R-11-48 retaining wall
- WB roadway temp widening
- WB final roadway
- CTH U bridge & roadway
- CTH V bridge & roadway
- CTH V bridge removal





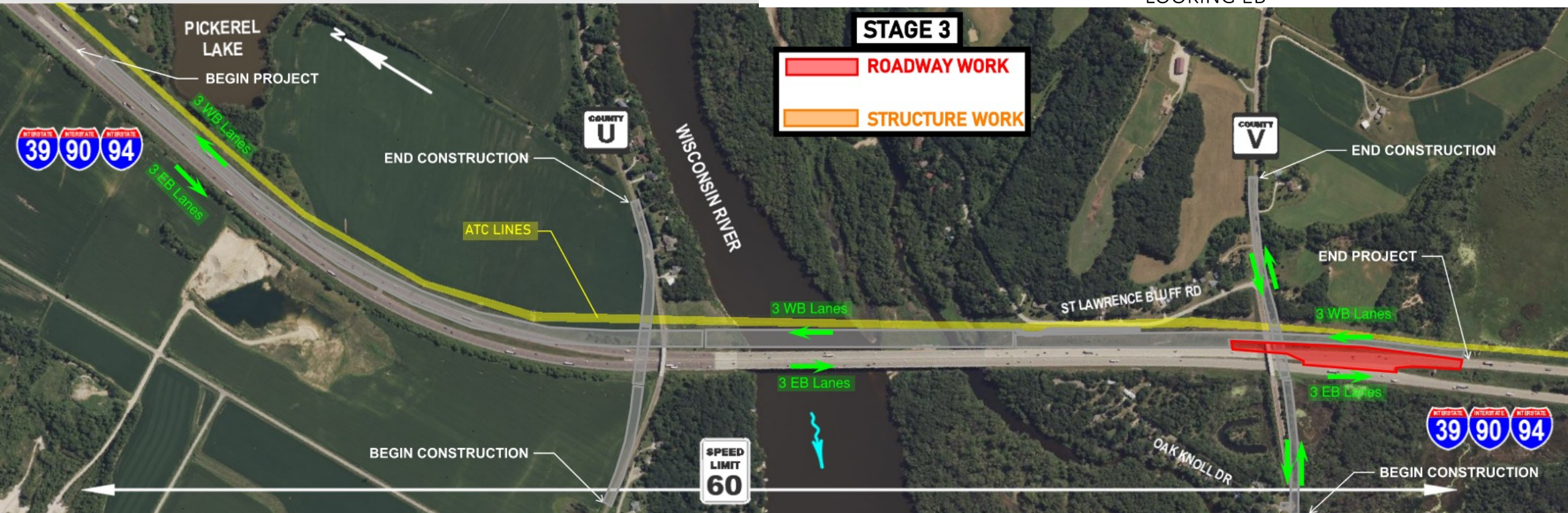
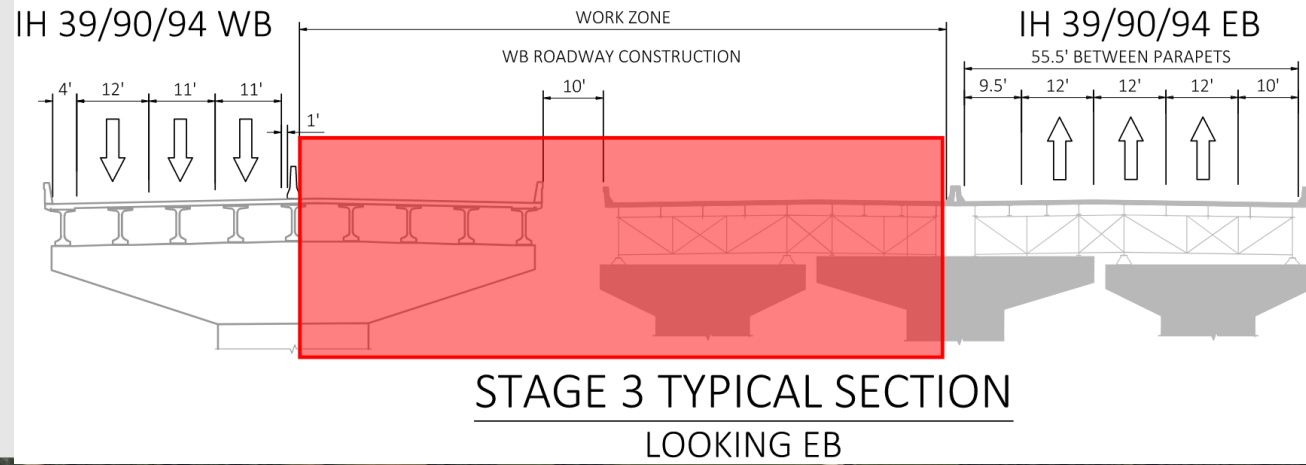
# Stage 3 – 2025

## Traffic

- IH 39/90/94
  - 3 lanes EB on existing bridge
  - 3 lanes WB on new WB bridge
- CTH U - 1 lane each direction on new bridge
- CTH V - 1 lane each direction on new bridge

## Construction

- WB final roadway (inside lanes and crossover reconstruction)





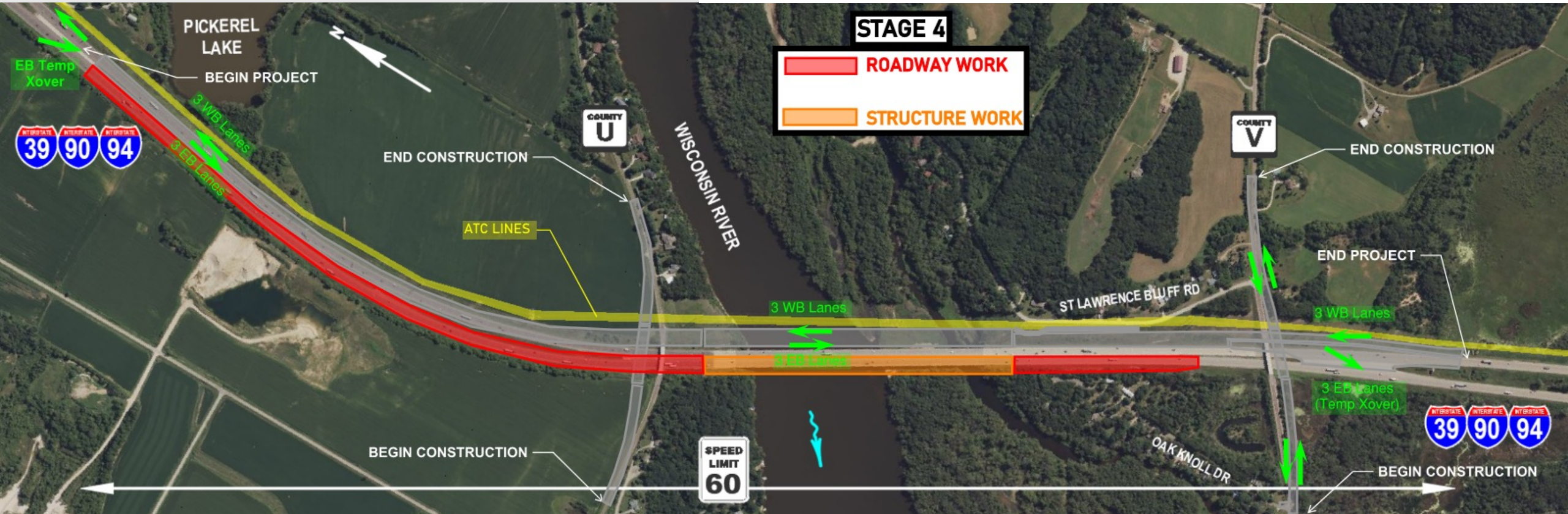
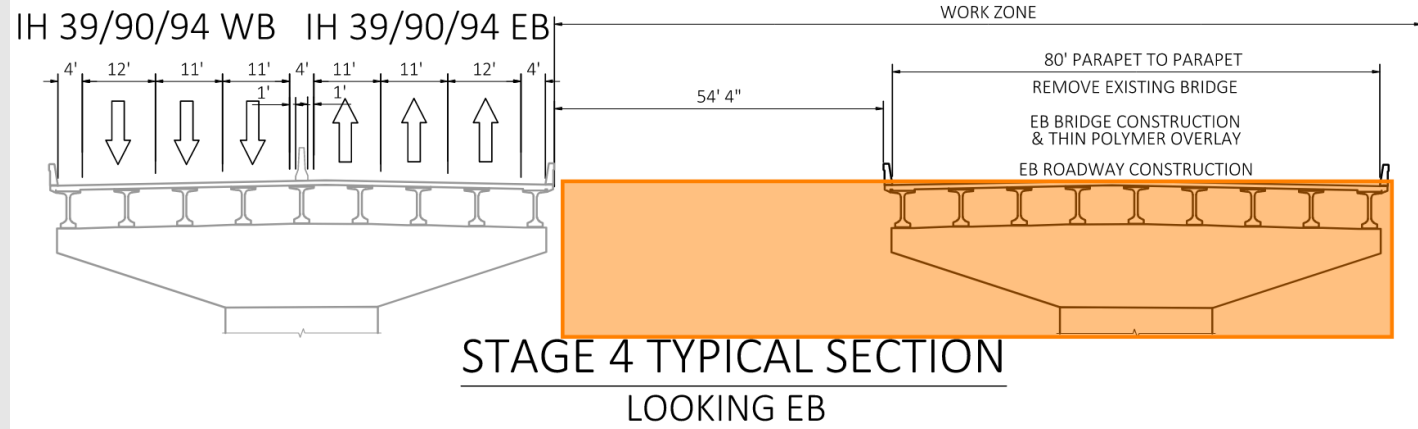
# Stage 4 – 2025 to 2027

## Traffic

- IH 39/90/94 - 3 lanes each direction on new WB bridge
- CTH U – 1 lane each direction on new bridge
- CTH V - 1 lane each direction on new bridge

## Construction

- Move causeways
- Remove existing WI River bridge
- WI River EB bridge & thin polymer overlay
- EB final roadway





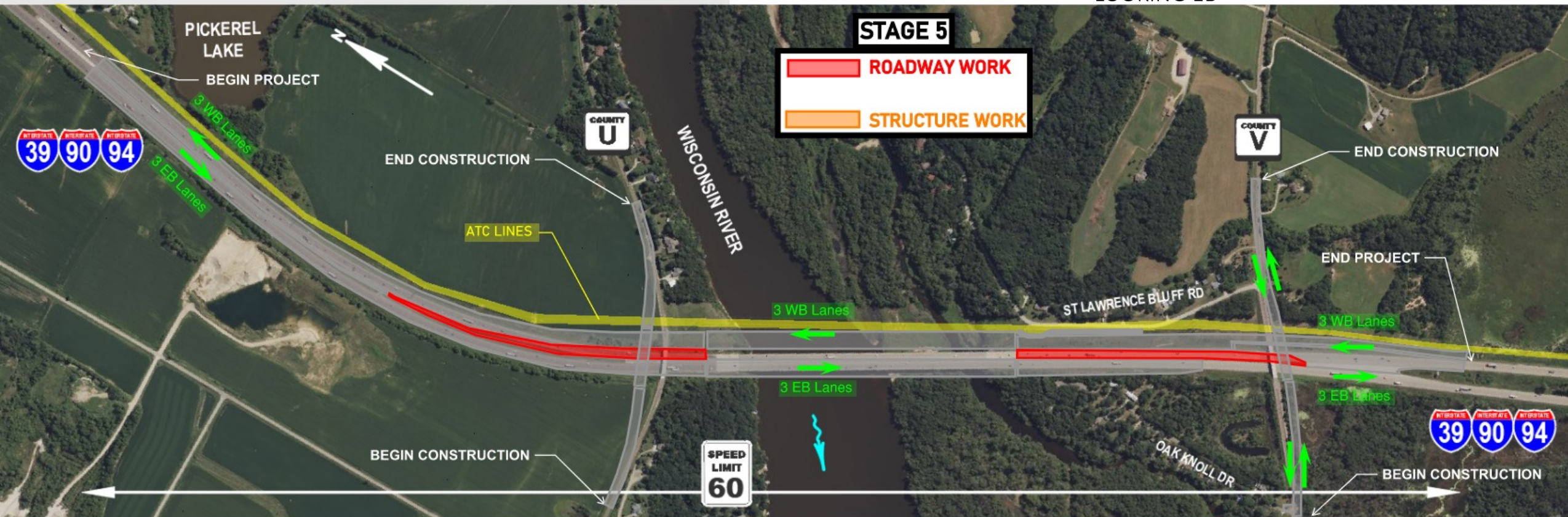
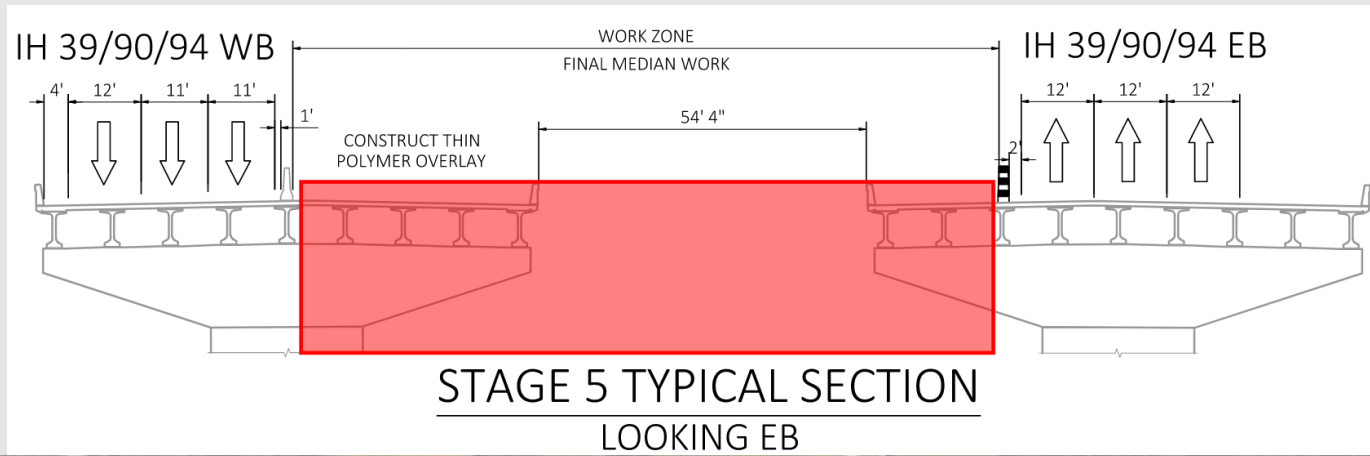
# Stage 5 – 2027

## Traffic

- IH 39/90/94 - 3 lanes each direction on new bridges
- CTH U – 1 lane each direction on new bridge
- CTH V - 1 lane each direction on new bridge

## Construction

- Remove causeways
- WI River WB bridge thin polymer overlay
- Final EB/WB median





# Questions?

